

The Wizard of Oz

April 8-13

20% SAVINGS for groups of 20+.

10% SAVINGS for groups of 10+

(No discounts for Saturday Evening)

Groups of 40+ receive 2 complimentary tickets
excluding Saturday Evening

Andrew Lloyd Webber's new production of The Wizard of Oz is an enchanting adaptation of the all-time classic, totally reconceived for the stage. Developed from the MGM screenplay, this new production contains all the beloved songs from the Oscar®-winning movie score, plus new songs by Tim Rice and Andrew Lloyd Webber. Click your heels together and join Scarecrow, Tin Man, Lion, Dorothy and her little dog Toto, as they journey through the magical Land of Oz to meet the Wizard. Watch out for the Wicked Witch of the West and her winged monkeys as you rediscover the real story of Oz in this fantastic musical treat for all the family.

Content Advisory: Everyone must have a ticket regardless of age. No one under the age of 5 admitted into the theater.

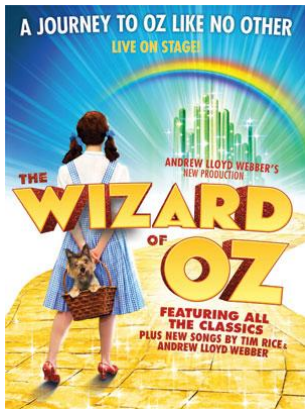
CALENDAR OF PERFORMANCES

| SUNDAY | MONDAY | TUESDAY | WEDNESDAY | THURSDAY | FRIDAY | SATURDAY |
|------------------------------|--------|-------------------|-------------------|--------------------|--------------------|------------------------------|
| | | April 8 7:30pm | April 9 7:30pm | April 10 7:30pm | April 11 8:00pm | April 12 2:00pm 8:00pm |
| April 13 1:00pm 6:30pm | | | | | | |

Note: Group calendar and offers subject to change and limited availability.

THE WIZARD OF OZ Group Sales Timeline

- Today** Submit your completed request form by email, phone, fax or mail. Requests will be honored in the order received, and Group Services will send an invoice. A 25% deposit is required within 2 weeks to hold your seats. Final balance due within 8 weeks of request date.
- Dec 9** Early Bird Savings Ends for groups of 20+. Tickets purchased after this date receive 10% savings



THE WIZARD OF OZ Group Sales Request

20% SAVINGS for Groups of 20+ (Excludes Sat Eve)

10% SAVINGS for Groups of 10+

Reserve your group tickets today! Call **919-281-0587**, or fill out this form with your top 3 choices of performance & seating area, and contact info. Please submit to Groups@DPACnc.com, fax to **919-281-0818** or mail to **DPAC, Attn: Ainsley Johnston, 123 Vivian Street, Durham, NC 27701**

Group Contact Name _____

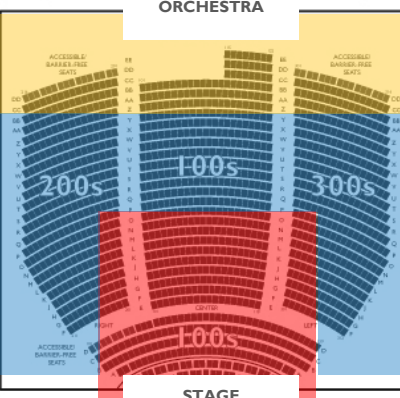
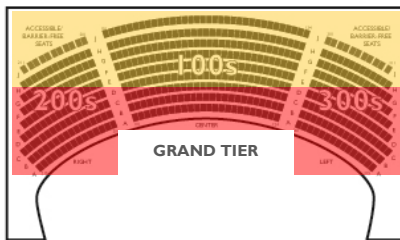
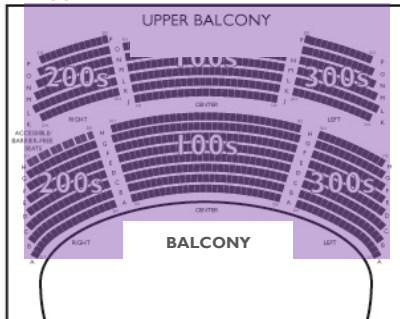
Phone Number _____

Email _____

| | CHOICE #1 | CHOICE #2 | CHOICE #3 |
|---|------------------|------------------|------------------|
| Performance Day/Times | | | |
| Preferred Seating Area | | | |
| Estimated Number in Group (20+)* | | | |

GROUP PRICING:

(Red = approximate 10 OR 20% OFF. Black = no discounts. Prices include all fees. Subject to change.)



| Seating Area | All Performances Excluding Sat Eve 10% (10-19) | All Performances Excluding Sat Eve 20% (20+) | Sat Evening (No Discounts) |
|---|---|---|-------------------------------|
| Gold Circle | N/A | N/A | N/A |
| Orchestra; | \$65.50 | \$58.75 | \$77.75 |
| Grand Tier; Orchestra AA-EE; | \$52.00 | \$46.75 | \$61.75 |
| Balconies | \$34.00 | \$30.75 | \$40.75 |

- Gold Circle
- Orchestra
- Rear Orchestra
Grand Tier
- Balcony

Performance Schedule:

| | |
|------------------|--------|
| Tuesday | 7:30pm |
| Wednesday | 7:30pm |
| Thursday Evening | 7:30pm |
| Friday | 8:00pm |
| Saturday Matinee | 2:00pm |
| Saturday Evening | 8:00pm |
| Sunday Matinee | 1:00pm |
| Sunday Evening | 6:30pm |

NOTE: This is a request form and does not guarantee tickets. Requests will be honored in the order they are received. You have 2 weeks from your request to submit a 25% deposit to hold your reservation. Requests are subject to limited availability. Prices and policy are subject to change.